

CRANEY ISLAND EASTWARD EXPANSION

Meeting Objectives & Introduction



Agenda

- **Meeting Objectives**
- **Project Introduction**
- **Purpose and Need**
 - **Port**
 - **Corps**
- **Related Infrastructure**



Meeting Objectives

- **Provide Information To Contractors and Suppliers**
- **Engage Contracting Community in Project Development**
- **Receive Feedback on Design Direction**



Project Purpose

- **Extends the Life of Craney Island as a Dredged Material Placement Area**
- **Provides Space for Construction of Craney Island Marine Terminal (CIMT)**
 - **4th State-Owned Marine Terminal**



Background

- **Final Feasibility Study and Environmental Impact Statement (EIS) Issued Jan 2006**
- **VPA Initiated Preliminary Engineering and Design Agreement (PED) May 2007**
 - **With Corps Providing Input on Limited Basis (Prior to Funding Authorization Under WRDA)**



Project Authorization

- **2007 Water Resources Development Act (WRDA) Approved November 2007**
 - **Total Cost: \$712,103,000**
 - **Cost Share Set at 50/50**



Authorized Project Summary

	Total
PED	\$29,661,000
LERR	\$40,960,000
Mitigation	\$50,200,000
Construction Management	\$24,718,000
Contingency	\$113,171,000
Dike Construction	\$453,393,000
Total	\$712,103,000



Schedule Need

- **Port Expansion Required By 2017**
- **CIDMMA Expansion Required By 2025**
- **Port Expansion Determines Schedule**
 - **10-year Construction Schedule**



Shipping Line Service

VPA

State-Owned Multi-User Facilities

Hapag-Lloyd
Hanjin Shipping
K Line
CMA-CGM
Nippon Yusen Kaishi
Evergreen-Marine Corp.
Mediterranean Shipping Co.
Clipper Line
SK Shipping Company
Zim Line
China Shipping Container Line
China Ocean shipping Co.
Yang Ming

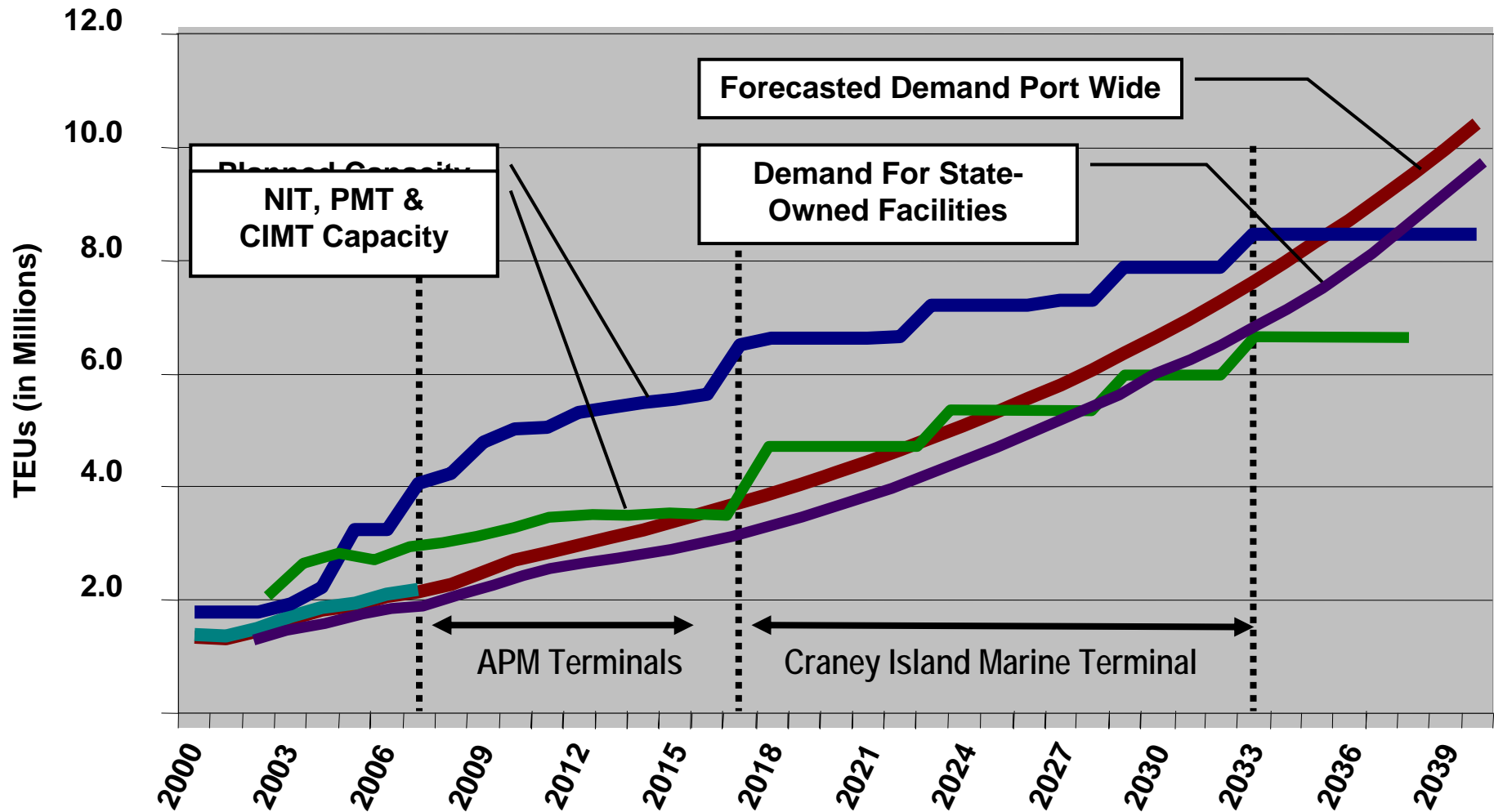
APM Terminals

Privately-Owned Terminal

Maersk

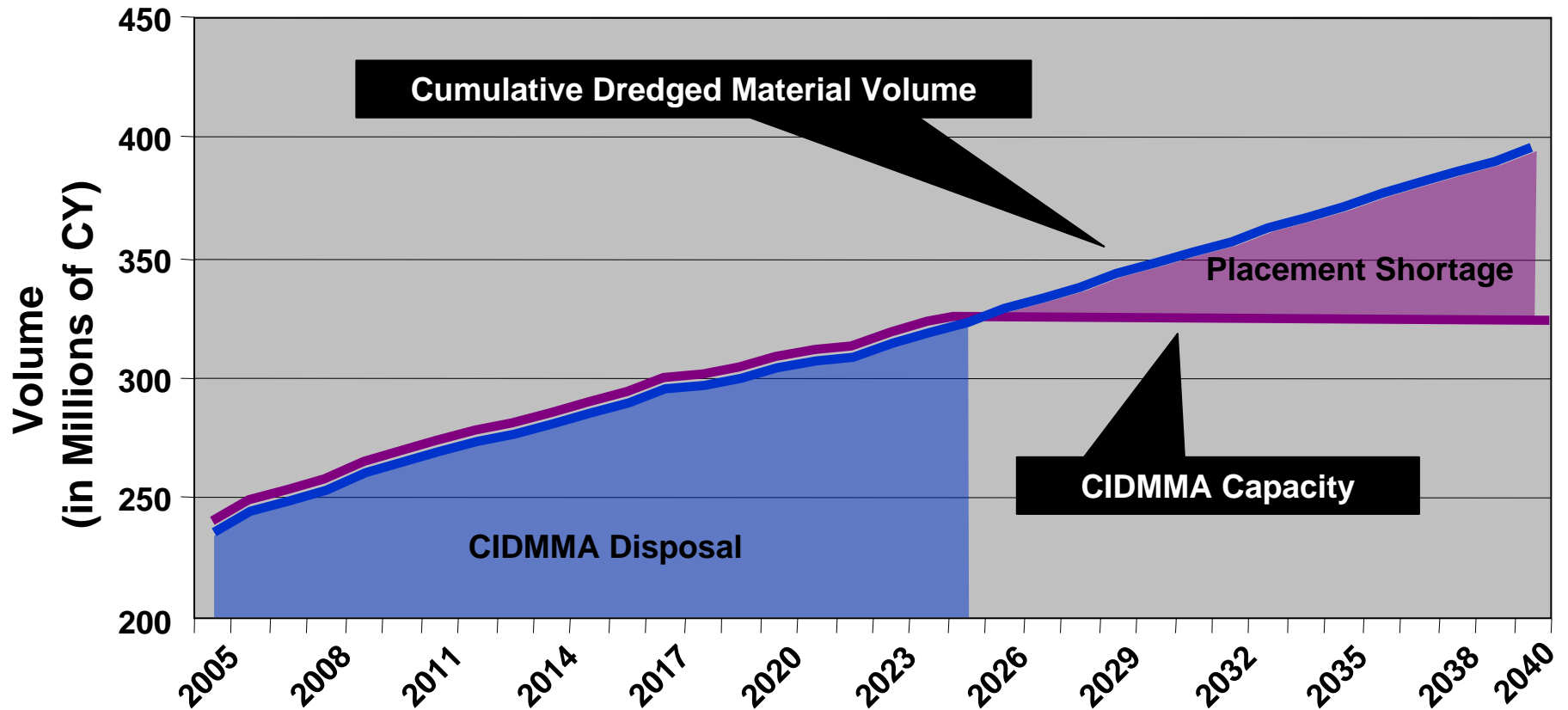


Port-Wide Forecast & Planned Capacity



Dredged Material Disposal

Forecast and Demand



CIDMMA Life Span

Component	EIS/Feasibility Report (MCY)	Current Design (MCY)
DM to +18 in Eastward Expansion (Gross)	+22.2	+21.0
Above +18 to Reach Final Grade (Allowing Settlement)	N/A	+25.0
Gross Capacity Gain	22.2	46.0
Material Placed in CIDMMA	- 9.9	- 24.0
NET CAPACITY GAIN	+12.0	+22.0
ADDITIONAL LIFE SPAN¹	2.5 Years	4.6 Years



¹Additional life span based on average inflow of 4.8 MCY per year.

Craney Island Project Update

- **PED Efforts**
 - **Geotechnical Investigations**
 - **Hydrodynamic Modeling**
 - **Ship Passing Evaluation**
 - **Dredged Material Management Plan**
 - **Joint Permit Application**
- **Main Dike Alternatives Analysis Report**

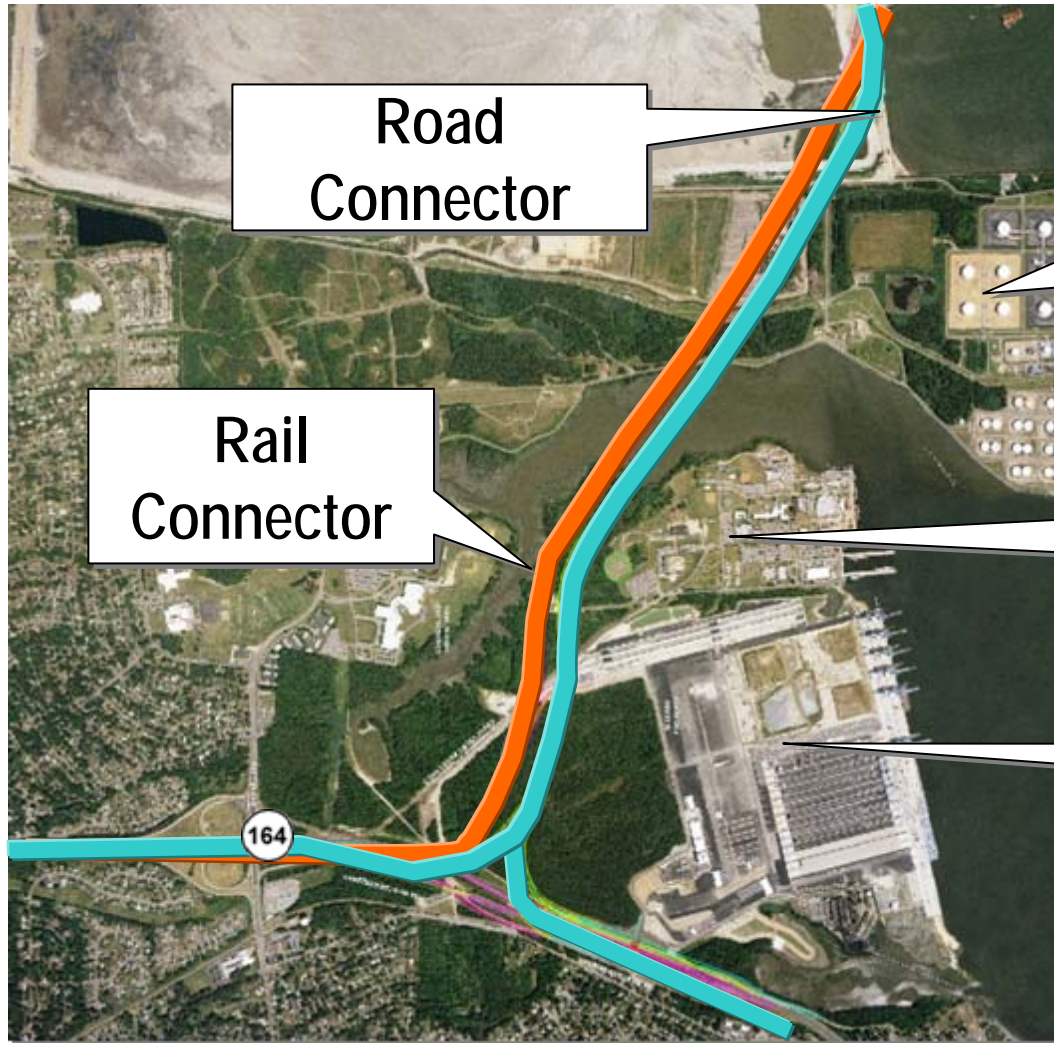


Road & Rail Connector

- **Limited-Access Multimodal Link To Supply Road and Rail Access Between CIMT & Route 164**
 - **CIMT Designed to Handle 50% of Cargo By Rail**
- **Demand: 6000 Trucks and 5 to 6 Trains Daily**
 - **Two Lane Road Segment of Elevated Highway**
 - **Rail to Link With Commonwealth Railway Spur Being Constructed Along the Median of Route 164**



Connector Alignment



Road
Connector

Rail
Connector

US Navy - Craney Island
Fuel Depot

US Coast Guard
Station - Portsmouth

APM Terminal



Road & Rail Schedule & Budget

Item	Schedule	Cost
Design-Build Road	2010 - 2013	\$230M
Design-Build Rail	2010 - 2013	\$ 100M
Land Acquisition	2008 - 2009	\$18M
Environmental Permitting & Planning	2008 - 2009	
Utility Relocations	2008 - 2009	
Preliminary Engineering	2008 - 2009	
Total Project Cost		\$348M



Summary

- **Partnership Between VPA and Corps**
- **Dual Purpose**
 - **Port Expansion is Required by 2017**
 - **CIDMMA Expansion required by 2025**
- **10-Year Design & Construction Schedule**
- **Construction To Begin Fall '09**

